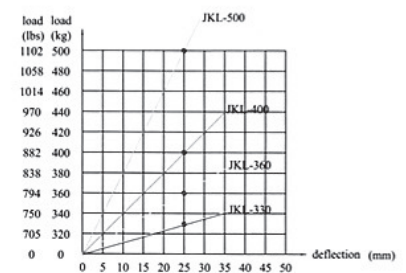
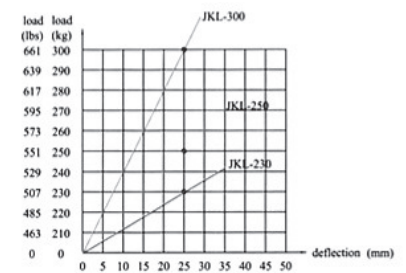
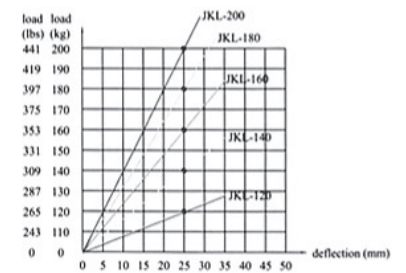
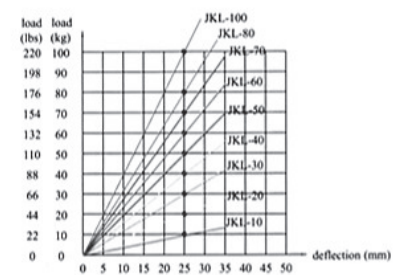


Technical Data of Type JKL Spring AVM

MODEL	LOAD (kg)	LOAD (lbs)	DEFLECTION (mm)	VERTICAL RIGIDITY k(kg/mm)
JKL-10	10	22	20 ~ 25	0.40
JKL-20	20	44		0.80
JKL-30	30	66		1.20
JKL-40	40	88		1.60
JKL-50	50	110		2.00
JKL-60	60	132		2.40
JKL-70	70	154		2.80
JKL-80	80	176		3.20
JKL-100	100	220		4.00
JKL-120	120	265		4.80
JKL-140	140	309		5.60
JKL-160	160	353		6.40
JKL-180	180	397		7.20
JKL-200	200	441		8.00
JKL-230	230	507		9.20
JKL-250	250	551		10.00
JKL-300	300	661		12.00
JKL-360	360	794	14.40	
JKL-400	400	882	16.00	
JKL-500	500	1102	20.00	

LOAD DEFLECTION CURVE/POINT MEANS THE BEST DEFLECTION



Outer Size of Type JKL Spring AVM

MODEL	OUTER SIZE(±2mm)					
	L	C	W	H	ΦE	S
JKL-10~JKL-500	152	120	70	188	13	M14×115

**CÔNG TY CỔ PHẦN QUỐC TẾ THÁI CHI**

ĐC: Số 22 - Tổ 4 - Phường Cầu Diễn - Quận Nam Từ Liêm - Hà Nội

ĐT: 043 76 333 88 - 043 7633 182 - Fax: 043 7633 183z

E-mail: thaichi@thaichi.vn - Website: www.thaichi.vn - www.loxochongrung.com

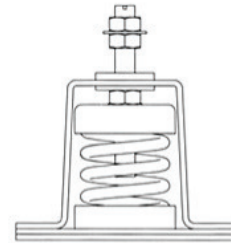
MST: 0104 574 954

*Instructions of Type JKL/JKL2 Spring Series AVM*

**Product Summary**

Type JKL spring anti-vibration mount includes the following parts:(As figure1)

- 1、locking nut
- 2、gasket
- 3、screw rod
- 4、adjustable nut
- 5、base support
- 6、frame



Outline Drawing

**Installation Instructions:**

- 1、 Twist the locking nut ① and gasket② off AVM. As figure 1.
- 2、 Turn screw rod of AVM ③ counterclockwisely to make sure that the gap between adjustable nut ④ and AVM is H,H of type JKL at least more than 30-35mm, H of type JKL-2 at least more than 55-60mm.As figure 2.
- 3、 Lower the unit equipment to make sure that the hole and screw rod of base support are in the one line. As figure 3.
- 4、 Under the static load action of unit, load could be transmitted to inner spring cover of base rubber,steel spring and base rubber plate throught screw rod. As figure 4.
- 5、 Fix the base plate of unit to the anti-vibration mount through locking nut① and gasket②.
- (Do not tighten the screw nut too much) As figure 5.
- 6、 Use ruler to measure the unit height. If unbalance, to adjust the free height according.
- 7、 To tighten the fixing bolt of base support after assuring the vibration isolator.
- 8、 To tighten the locking nut 1 and gasket 2 of the rod as figure 9.

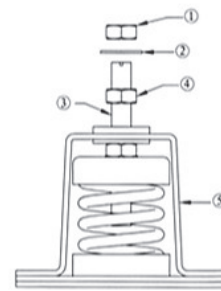


figure1

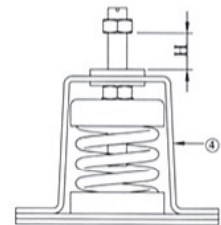


figure 2

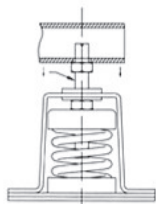


figure 4

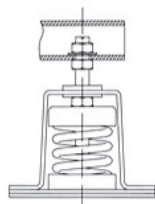


figure 5

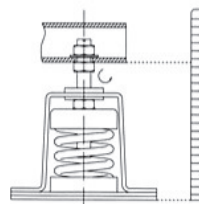
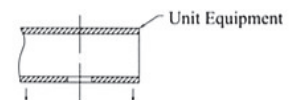


figure 6



Unit Equipment

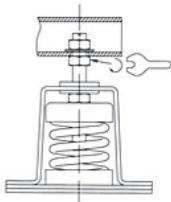


figure 7

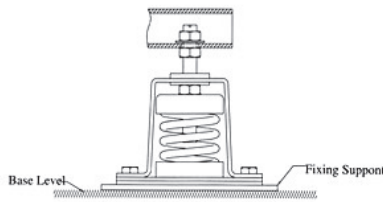


figure 8

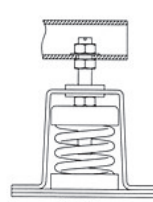


figure 9

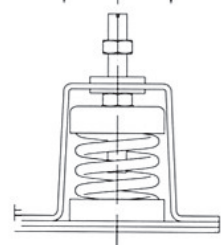


figure 3